



100 years of  
dedication  
to quality  
and service.



# FARMERS ALLOY FABRICATING, INC

When fabrication has to be right...right now!







- In January 2020 we relocated ALL operations to our highway 146 location\*\*\* This will allow us to provide faster and better response and efficiency for our local customer base
- 100 years of heat and pressure have fire formed us into the ultimate “*leather man tool*” for refineries, chemical, and power plants.
- Consistent quality
- Focused on results
- Reliable service
- We continue to modernize, and with sustainable growth, conservatively upgrade our business.

Who do we  
work with?  
...to name a  
few...

Here's a portion of our vendors list

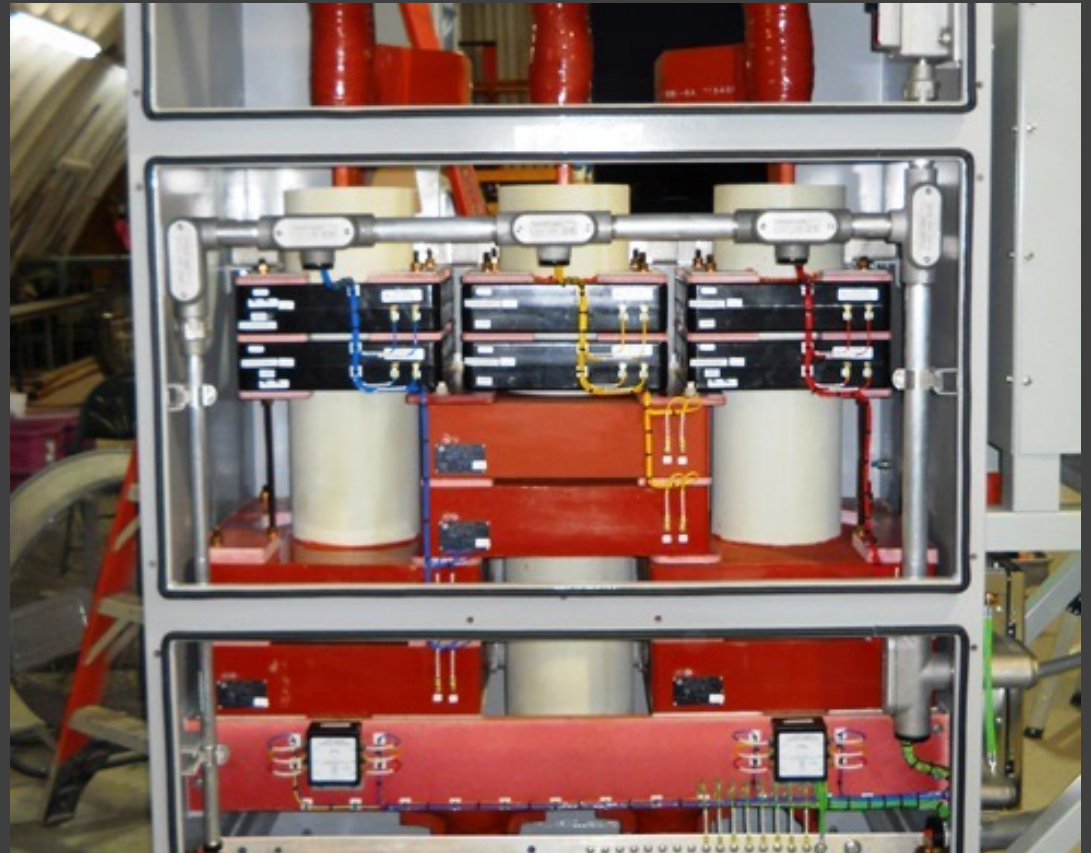
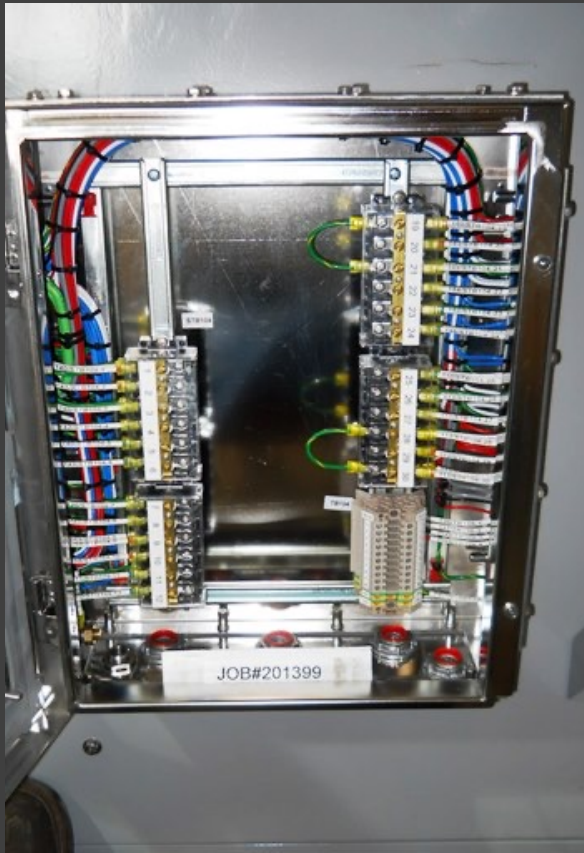
- Exxon
- Marathon
- BP
- General Electric
- Lubrizol
- Dow
- INEOS
- RPS
- Valero
- Koch Industries
- Day & Zimmermann
- KBR
- Kiewit
- Shell
- Lucite
- Covestro
- Rohm and Haas
- Baker Hughes
- Denora
- Lyondell Basell
- Westlake





# Electrical

- Buss bar fabrication
- Junction box pre-terminated.
- Motor starter rack, with starters and disconnects.
- Complete pump skid assembly.
- Glastic fabrication in sheet, channel, or angle.



Electrical

# Buss bar







Special projects





Repairs

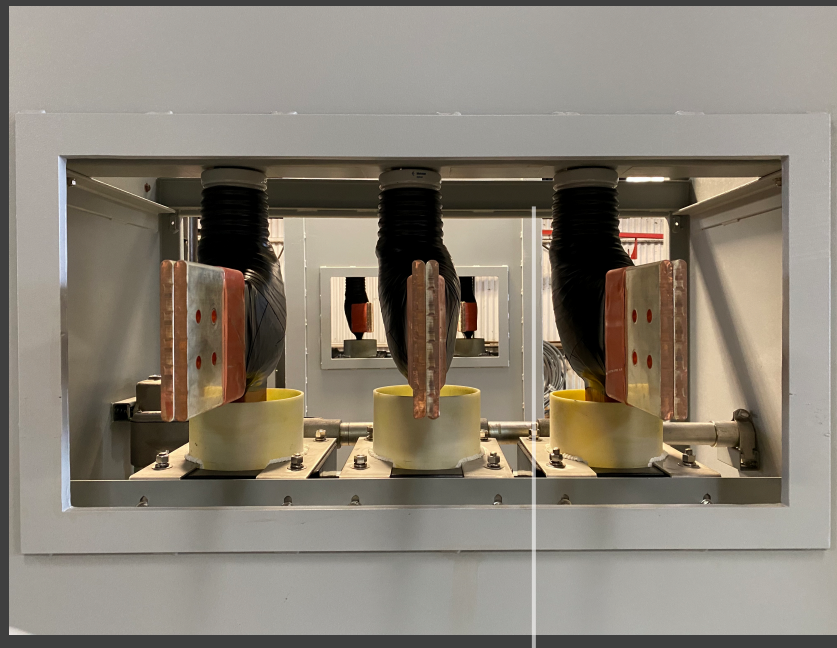






Refurbished





Refurbished



What can we build  
for you?

Call us today and  
we're on it!







...AND please check out our copper and brass metal service centers...

Farmers Copper in  
La Marque / San Antonio  
[farmerscopper.com](http://farmerscopper.com)